



# MDECU Newsletter

Winter News 2024

## RECEIVE YOUR TAX REFUND FASTER!

Set up direct deposit into your MDECU account. Our routing #211977414



### SAVE THE DATE!

Annual Meeting - April 1, 2024  
5:30 PM (doors open at 5:00)  
GAMES - PRIZES - REFRESHMENTS



MDC Training Center  
125 Maxim Road, Hartford  
Registration due March 24, 2023. To register, please call or text 860-560-9036, or email [info@mdecu.org](mailto:info@mdecu.org).

WIN UP TO

# \$5,000

IN QUARTERLY PRIZES

Start saving now for next year's holidays!  
\$25/week will go a long way and enter you to win!



Official account and prize entry rules, and a complete list of prizes are available at [savetowin.org](http://savetowin.org). Void where prohibited by law. © CU Solutions Group, 2022. All rights reserved.



@savetowin



/savetowinmi

**SAVE TO WIN**  
THE SMARTEST WAY TO SAVE

**DON'T  
FORGET  
THESE  
CONVENIENT  
APPS!**

**REMOTE DEPOSIT  
CAPTURE**  
Save a trip – take a pic  
and  
deposit your checks!



**SECURLOCK**  
FOR CREDIT CARDS



**CardNav** By CO-OP  
FOR DEBIT CARDS

Take complete control of your debit and credit cards to help prevent fraud and misuse.

- Turn your card on and off in seconds – great if you might have misplaced it
- GPS-enabled location parameters- limit where the card can be used
- Select what type of transactions and merchant-type are allowed
- Set spending limits
- Card activity notifications in real-time for any unapproved or over-limit use
- 24-hour support

**ATTENTION PARENTS AND  
STUDENTS!**

Scholarship Applications will be out on March 1st and due May 1st.

Go to [MDECU.org](http://MDECU.org) for the form

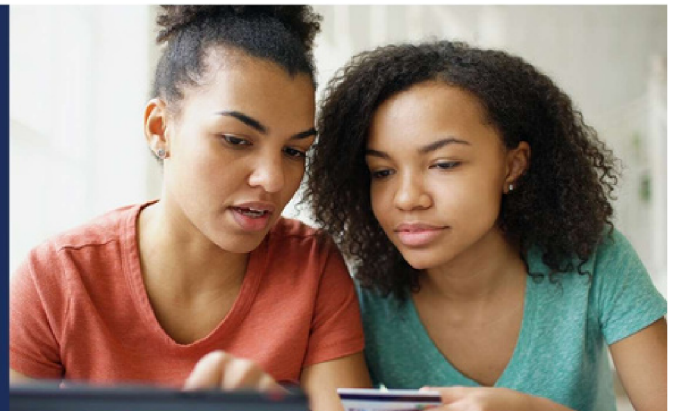


**TEACH THEM  
FINANCIAL  
RESPONSIBILITY  
WITH THIS  
SPECIAL  
ACCOUNT**

**METRO TEEN  
CHECKING**

*Helping young adults become financially literate*

- For teens aged 13 – 17
- No minimum balance required
- No monthly charge
- Free debit card
- Free mobile & online banking
- Parent/guardian is joint account holder



**CLOSINGS**

Jan 15th Martin Luther King Jr Day  
Feb 19th President's Day  
March 29th Good Friday

250 Murphy Road, Hartford, CT 06114  
(860) 560-9036 | [www.mdecu.org](http://www.mdecu.org)  
Access 24: (860) 549-5349 / (860) 549-5357

